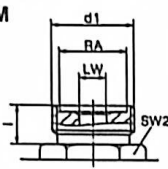
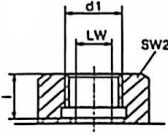
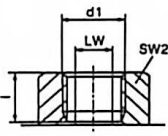
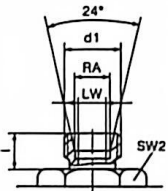
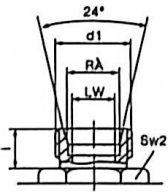
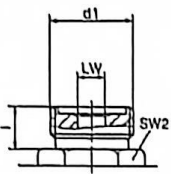
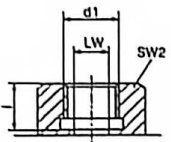
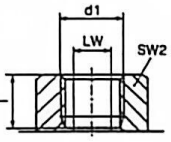
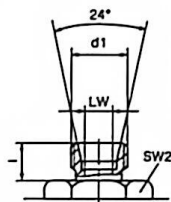
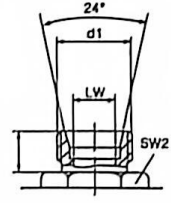


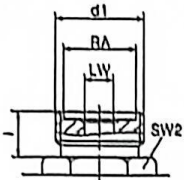
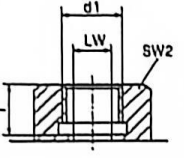
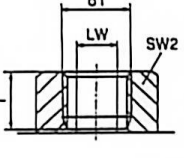
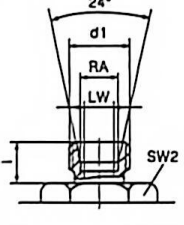
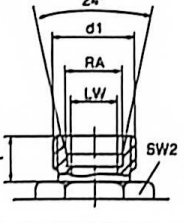
外形尺寸 Overall Dimension

连接口略图 Port Chart	简略型号 Model	PN (bar)	DN	LW	d1	l	L	L1	B	h2	SW1	SW2
 <p>本接头符合JB984-77标准 This tie-in accord JB984-77 standard</p>	KHB-M16×1.5	500	06	06	M16×1.5	11	69	38	28	34	09	22
	KHB-M22×1.5	500	08	08	M22×1.5	12	76	42	34	40	09	27
	KHB-M27×1.5	500	10	10	M27×1.5	12	76	42	34	40	09	27
	KHB-M30×1.5	400	16	15	M30×1.5	13	84	47	37	43	09	32
	KHB-M36×2	315	20	20	M36×2	15	103	60	47	53	12	41
	KHB-M42×2	315	25	23	M42×2	18	116	64	54	60	12	46
	KHB-M52×2	315	32	32	M52×2	20	149	74	64	70	14	55
	KHB-M60×2	315	40	38	M60×2	22	174	84	74	80	14	70
	KHB-G1/8	500	04	06	G1/8	10	69	38	28	34	09	22
	KHB-G1/4	500	06	06	G1/4	14	69	38	28	34	09	22
	KHB-G3/8	500	10	10	G3/8	14	72	42	34	40	09	27
	KHB-G1/2	500	13	12	G1/2	16	83	47	37	43	09	30
	KHB-G1/2	400	16	15	G1/2	16	83	47	37	43	09	32
	KHB-G3/4	315	20	20	G3/4	18	95	60	47	53	12	41
	KHB-G1	315	25	25	G1	21	113	64	54	60	12	46
	KHB-G1 1/4	315	32	32	G1 1/4	22	110	74	64	70	14	55
	KHB-G1 1/2	315	40	38	G1 1/2	24	130	84	74	80	14	70
	KHB-G2	315	50	48	G2	28	140	100	96	104	14	85
	KHB-NPT1/8	500	04	06	NPT1/8	10	69	38	28	34	09	22
	KHB-NPT1/4	500	06	06	NPT1/4	14	69	38	28	34	09	22
	KHB-NPT3/8	500	10	10	NPT3/8	14	72	42	34	40	09	27
	KHB-NPT1/2	500	13	12	NPT1/2	16	83	47	37	43	09	30
	KHB-NPT1/2	400	16	15	NPT1/2	16	83	47	37	43	09	32
	KHB-NPT3/4	315	20	20	NPT3/4	18	95	60	47	53	12	41
	KHB-NPT1	315	25	25	NPT1	21	113	64	54	60	12	46
	KHB-NPT1 1/4	315	32	32	NPT1 1/4	22	110	74	64	70	14	55
	KHB-NPT1 1/2	315	40	38	NPT1 1/2	24	130	84	74	80	14	70
	KHB-NPT2	315	50	48	NPT2	28	140	100	96	104	14	85
	KHB-06LR	500	04	04	M12×1.5	10	67	38	28	34	09	22
	KHB-08LR	500	06	06	M14×1.5	10	67	38	28	34	09	22
	KHB-10LR	500	08	08	M16×1.5	11	74	42	34	40	09	27
	KHB-12LR	500	10	10	M18×1.5	11	74	42	34	40	09	27
	KHB-15LR	500	13	12	M22×1.5	12	82	47	37	43	09	30
	KHB-15LR	400	12	12	M22×1.5	12	82	47	37	43	09	32
	KHB-18LR	500	13	12	M26×1.5	12	82	47	37	43	09	30
	KHB-18LR	400	16	15	M26×1.5	12	82	47	37	43	09	32
	KHB-22LR	315	20	19	M30×2	14	101	60	47	53	12	41
	KHB-28LR	315	25	24	M36×2	14	108	64	54	60	12	46
	KHB-35LR	315	32	30	M45×2	16	141	74	64	70	14	55
	KHB-42LR	315	40	36	M52×2	16	162	84	74	80	14	70
		KHB-08SR	500	04	05	M16×1.5	12	73	38	28	34	09
KHB-10SR		500	06	06	M18×1.5	12	73	38	28	34	09	22
KHB-12SR		500	08	08	M20×1.5	12	76	42	34	40	09	27
KHB-14SR		500	10	10	M22×1.5	14	80	42	34	40	09	27
KHB-16SR		500	13	12	M24×1.5	14	86	47	37	43	09	30
KHB-16SR		400	12	12	M24×1.5	14	86	47	37	43	09	32
KHB-20SR		500	13	12	M30×2	16	90	47	37	43	09	30
KHB-20SR		400	16	15	M30×2	16	90	47	37	43	09	32
KHB-26SR		315	20	20	M36×2	18	109	60	47	53	12	41
KHB-30SR		315	25	25	M42×2	20	120	64	54	60	12	46
KHB-38SR		315	32	30	M52×2	22	153	74	64	70	14	55

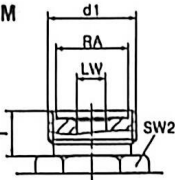
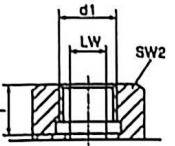
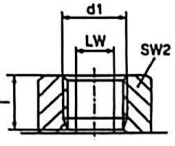
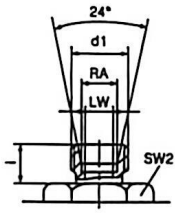
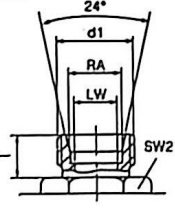
外形尺寸 Overall Dimension

连接口略图 Port Chart	简略型号 Model	PN (bar)	DN	LW	d1	i	L	L1	B	h2	SW1	SW2	S
 <p>本接头符合JB984-77标准 This fits-in accord JB984-77 standard</p>	KHB3K-M16×1.5	500	08	08	M16×1.5	11	69	38	28	34	09	22	27.5
	KHB3K-M22×1.5	500	08	08	M22×1.5	12	76	42	34	40	09	27	33
	KHB3K-M27×1.5	500	10	10	M27×1.5	12	76	42	34	40	09	27	33
	KHB3K-M30×1.5	400	16	15	M30×1.5	13	84	47	37	43	09	32	37
	KHB3K-M36×2	315	20	20	M36×2	16	103	60	47	53	12	41	45.5
	KHB3K-M42×2	315	25	23	M42×2	18	116	64	54	60	12	46	54
	KHB3K-M52×2	315	32	32	M52×2	20	149	74	64	70	14	55	70
	KHB3K-M60×2	315	40	38	M60×2	22	174	84	74	80	14	70	84
	KHB3K-G1/8	500	04	06	G1/8	10	69	38	28	34	09	22	35
	KHB3K-G1/4	500	06	06	G1/4	14	69	38	28	34	09	22	35
	KHB3K-G3/8	500	10	10	G3/8	14	72	42	34	40	09	27	36
	KHB3K-G1/2	400	13	12	G1/2	16	83	47	37	43	09	30	40
	KHB3K-G1/2	400	16	15	G1/2	16	83	47	37	43	09	32	42
	KHB3K-G3/4	315	20	20	G3/4	18	95	60	47	53	12	41	49
	KHB3K-G1	315	25	25	G1	21	113	64	54	60	12	46	56.5
	KHB3K-G1 1/4	315	32	32	G1 1/4	22	110	74	64	70	14	55	62.5
	KHB3K-G1 1/2	315	40	38	G1 1/2	24	130	84	74	80	14	70	81
KHB3K-G2	315	50	48	G2	26	140	100	96	104	14	85	92.5	
	KHB3K-NPT1/8	500	04	06	NPT1/8	10	69	38	28	34	09	22	35
	KHB3K-NPT1/4	500	06	06	NPT1/4	14	69	38	28	34	09	22	35
	KHB3K-NPT3/8	500	10	10	NPT3/8	14	72	42	34	40	09	27	36
	KHB3K-NPT1/2	400	13	12	NPT1/2	16	83	47	37	43	09	30	40
	KHB3K-NPT1/2	400	16	15	NPT1/2	16	83	47	37	43	09	32	42
	KHB3K-NPT3/4	315	20	20	NPT3/4	18	95	60	47	53	12	41	49
	KHB3K-NPT1	315	25	25	NPT1	21	113	64	54	60	12	46	56.5
	KHB3K-NPT1 1/4	315	32	32	NPT1 1/4	22	110	74	64	70	14	55	62.5
	KHB3K-NPT1 1/2	315	40	38	NPT1 1/2	24	130	84	74	80	14	70	81
	KHB3K-NPT2	315	50	48	NPT2	26	140	100	96	104	14	85	92.5
	KHB3K-08LR	500	04	04	M12×1.5	10	67	38	28	34	09	22	33.5
	KHB3K-08LR	500	06	06	M14×1.5	10	67	38	28	34	09	22	33.5
	KHB3K-10LR	500	08	08	M16×1.5	11	74	42	34	40	09	27	37
	KHB3K-12LR	500	10	10	M18×1.5	11	74	42	34	40	09	27	37
	KHB3K-15LR	400	13	12	M22×1.5	12	82	47	37	43	09	30	40
	KHB3K-15LR	400	12	12	M22×1.5	12	82	47	37	43	09	32	40
	KHB3K-18LR	400	13	12	M26×1.5	12	82	47	37	43	09	30	42
	KHB3K-18LR	400	16	15	M26×1.5	12	82	47	37	43	09	32	42
	KHB3K-22LR	315	20	19	M30×2	14	101	60	47	53	12	41	52
	KHB3K-28LR	315	25	24	M36×2	14	108	64	54	60	12	46	54
	KHB3K-35LR	315	32	30	M45×2	16	141	74	64	70	14	55	66
	KHB3K-42LR	315	40	36	M52×2	16	162	84	74	80	14	70	78
	KHB3K-08SR	500	04	05	M16×1.5	12	73	38	28	34	09	22	37
	KHB3K-10SR	500	06	06	M18×1.5	12	73	38	28	34	09	22	37
	KHB3K-12SR	500	08	08	M20×1.5	12	76	42	34	40	09	27	38
	KHB3K-14SR	500	10	10	M22×1.5	14	80	42	34	40	09	27	40
	KHB3K-16SR	400	13	12	M24×1.5	14	86	47	37	43	09	30	44
	KHB3K-16SR	400	12	12	M24×1.5	14	86	47	37	43	09	32	43.5
	KHB3K-20SR	400	13	12	M30×2	16	90	47	37	43	09	30	44
	KHB3K-20SR	400	16	15	M30×2	16	90	47	37	43	09	32	45.5
	KHB3K-25SR	315	20	20	M36×2	18	109	60	47	53	12	41	56
	KHB3K-30SR	315	25	25	M42×2	20	120	64	54	60	12	46	60
	KHB3K-38SR	315	32	30	M52×2	22	153	64	64	70	14	55	72

外形尺寸 Overall Dimension

连接口略图 Port Chart	简略型号 Model	PN (bar)	DN	LW	RA	d1	l	L	L1	B	L2	h1	h2	SW1	SW2	D	h3
M  本规格符合JB684-77标准 This fit-in accord JB684-77 standard	VH2V-M16 x 1.5	500	06	06	11	M16 x 1.5	11	69	40	26	31.5	13.5	35	09	22	4.5	4.8
	VH2V-M27 x 1.5	500	10	10	20	M27 x 1.5	12	76	42	32	31.5	16	40	09	27	5.3	5.8
	VH2V-M36 x 2	315	20	20	30	M36 x 2	15	103	60	48	48.5	25	58	12	41	6.5	6
	VH2V-M42 x 2	315	25	23	35	M42 x 2	18	116	65	57	50.5	28.5	65	12	46	8.5	7
连接口略图 Port Chart	简略型号 Model	PN (bar)	DN	LW	RA	d1	l	L	L1	B	L2	h1	h2	SW1	SW2	D	h3
G 	VH2V-G1/4	500	06	06	/	G1/4	14	69	40	26	31.5	13.5	35	09	22	4.5	4.8
	VH2V-G3/8	500	10	10	/	G3/8	14	72	42	32	31.5	16	40	09	27	5.3	5.8
	VH2V-G1/2	500	13	12	/	G1/2	16	83	48	35	38.5	18	45	09	30	6.5	6
	VH2V-G3/4	315	20	20	/	G3/4	18	93	60	50	48.5	23	58	12	41	6.5	6
	VH2V-G1	315	25	25	/	G1	21	115	65	57	50.5	27.5	65	12	46	8.5	7
连接口略图 Port Chart	简略型号 Model	PN (bar)	DN	LW	RA	d1	l	L	L1	B	L2	h1	h2	SW1	SW2	D	h3
NPT(PT) 	VH2V-NPT1/4	500	06	06	/	NPT1/4	14	69	40	26	31.5	13.5	35	09	22	4.5	4.8
	VH2V-NPT3/8	500	10	10	/	NPT3/8	14	72	42	32	31.5	16	40	09	27	5.3	5.8
	VH2V-NPT1/2	500	13	12	/	NPT1/2	16	83	48	35	38.5	18	45	09	30	6.5	6
	VH2V-NPT3/4	315	20	20	/	NPT3/4	18	95	60	50	48.5	23	58	12	41	6.5	6
	VH2V-NPT1	315	25	25	/	NPT1	21	113	65	57	50.5	27.5	65	12	46	8.5	7
连接口略图 Port Chart	简略型号 Model	PN (bar)	DN	LW	RA	d1	l	L	L1	B	L2	h1	h2	SW1	SW2	D	h3
LR 	VH2V-08LR	500	06	06	08	M14 x 1.5	10	67	40	26	31.5	13.5	35	09	22	4.5	4.8
	VH2V-12LR	500	10	10	12	M18 x 1.5	11	74	42	32	31.5	16	40	09	27	5.3	5.8
	VH2V-15LR	500	13	12	15	M22 x 1.5	12	82	48	35	38.5	18	45	09	30	6.5	6
	VH2V-18LR	500	13	12	18	M26 x 1.5	12	82	48	35	38.5	18	45	09	30	6.5	6
	VH2V-22LR	315	20	19	22	M30 x 2	14	101	60	50	48.5	23	58	12	41	6.5	6
	VH2V-28LR	315	25	24	28	M36 x 2	14	108	65	57	50.5	27.5	65	12	46	8.5	7
连接口略图 Port Chart	简略型号 Model	PN (bar)	DN	LW	RA	d1	l	L	L1	B	L2	h1	h2	SW1	SW2	D	h3
SR 	VH2V-10SR	500	06	06	10	M18 x 1.5	12	73	40	26	31.5	13.5	35	09	22	4.5	4.8
	VH2V-14SRR	500	10	10	14	M22 x 1.5	14	80	42	32	31.5	16	40	90	27	5.3	5.8
	VH2V-16SRR	500	13	12	16	M24 x 1.5	14	86	48	35	38.5	18	45	09	30	6.5	6
	VH2V-20SR	500	13	12	20	M30 x 1.5	16	90	48	35	38.5	18	45	09	30	6.5	6
	VH2V-25SR	315	20	20	25	M36 x 2	18	109	60	50	48.5	23	58	12	41	6.5	6
	VH2V-30SR	315	25	25	30	M42 x 2	20	120	65	57	50.5	27.5	65	12	46	8.5	7

外形尺寸 Overall Dimension

连接口略图 Port Chart	简略型号 Model	PN (bar)	DN	LW	RA	d1(D2)	I	L	L1	B	L2	h1	h2	SW1	SW2	D	h3	L3	D1	C
 <p>本图符合JB004-77标准 This fig. in Accord JB004-77 standard</p>	VH3V-M16×1.5	500	06	06	11	M16×1.5	11	69	40	26	31.5	13.5	35	09	22	4.5	4.8	26	6	4
	VH3V-M27×1.5	500	10	10	20	M27×1.5	12	76	42	32	31.5	16	40	09	27	5.3	5.8	31	8	4
	VH3V-M36×2	315	20	20	30	M36×2	15	103	60	48	48.5	25	58	12	41	6.5	6	44	15	5.5
	VH3V-M42×2	315	25	23	35	M42×2	18	116	65	57	50.5	28.5	65	12	50	8.5	7	53.5	22	5
	VH3V-G1/4	500	06	06	/	G1/4	14	69	40	26	31.5	13.5	35	09	22	4.5	4.8	26	6	4
	VH3V-G3/8	500	10	10	/	G3/8	14	72	42	32	31.5	16	40	09	27	5.3	5.8	31	8	4
	VH3V-G1/2	500	13	12	/	G1/2	16	83	48	35	38.5	18	45	09	30	6.5	6	35	12	3
	VH3V-G3/4	315	20	20	/	G3/4	18	93	60	50	48.5	23	58	12	41	6.5	6	44	15	5.5
	VH3V-G1	315	25	25	/	G1	21	115	65	57	50.5	27.5	65	12	46	8.5	7	53.5	22	5
	VH3V-NPT1/4	500	06	06	/	NPT1/4	14	69	40	26	31.5	13.5	35	09	22	4.5	4.8	26	6	4
	VH3V-NPT3/8	500	10	10	/	NPT3/8	14	72	42	32	31.5	16	40	09	27	5.3	5.8	31	8	4
	VH3V-NPT1/2	500	13	12	/	NPT1/2	16	83	48	35	38.5	18	45	09	30	6.5	6	35	12	3
	VH3V-NPT3/4	315	20	20	/	NPT3/4	18	95	60	50	48.5	23	58	12	41	6.5	6	44	15	5.5
	VH3V-NPT1	315	25	25	/	NPT1	21	113	65	57	50.5	27.5	65	12	46	8.5	7	53.5	22	5
	VH3V-08LR	500	06	06	08	M14×1.5	10	67	40	26	31.5	13.5	35	09	22	4.5	4.8	26	6	4
	VH3V-12LR	500	10	10	12	M18×1.5	11	74	42	32	31.5	16	40	09	27	5.3	5.8	31	8	4
	VH3V-15LR	500	13	12	15	M22×1.5	12	82	48	35	38.5	18	45	09	30	6.5	6	35	12	3
	VH3V-18LR	500	13	12	18	M26×1.5	12	82	48	35	38.5	18	45	09	30	6.5	6	35	12	3
	VH3V-22LR	315	20	19	22	M30×2	14	101	60	50	48.5	23	58	12	41	6.5	6	44	15	5.5
	VH3V-28LR	315	25	24	28	M36×2	14	108	65	57	50.5	27.5	65	12	46	8.5	7	53.5	22	5
	VH3V-10SR	500	06	06	10	M18×1.5	12	73	40	26	31.5	13.5	35	09	22	4.5	4.8	26	6	4
	VH3V-14SRR	500	10	10	14	M22×1.5	14	80	42	32	31.5	16	40	09	27	5.3	5.8	31	8	4
	VH3V-16SRR	500	13	12	16	M24×1.5	14	86	48	35	38.5	18	45	09	30	6.5	6	35	12	3
	VH3V-20SR	500	13	12	20	M30×1.5	16	90	48	35	38.5	18	45	09	30	6.5	6	35	12	3
	VH3V-25SR	315	20	20	25	M36×2	18	109	60	50	48.5	23	58	12	41	6.5	6	44	15	5.5
	VH3V-30SR	315	25	25	30	M42×2	20	120	65	57	50.5	27.5	65	12	46	8.5	7	53.5	22	5

CJZQ型球形截止阀(即QJZ)

CJZQ Type High Pressure Ball Valve

型号代号(订货示例) / Type Description (Illustrations for order)

C **JZQ** - **□** **※** **H**
 (1) (2) (3) (4) (5)

(1)主要应用领域; C—船用

Main application: C—Marine application

(2)名称代号; JZQ—球形截止阀

Name code: JZQ ball core stop valve

(3)连接方式 / Connecting method

F法兰式连接/F—Flange connection

L外螺纹连接式/L—External thread connection

G内螺纹连接式/G—Internal thread connection

(4)公称通径/Nominal diameter; 6—100mm

(5)公称压力/ Nominal pressure; H—31.5MPa

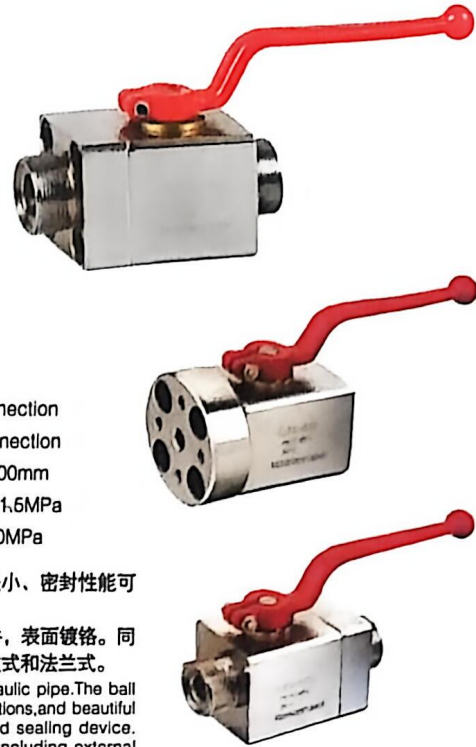
F—20MPa

产品简介 / Product Overview

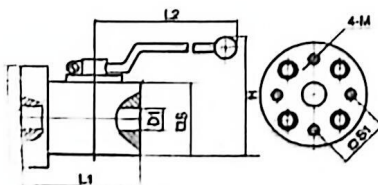
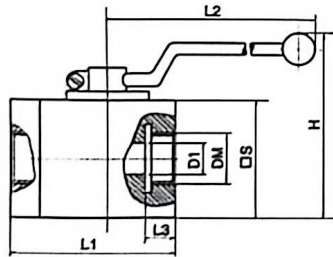
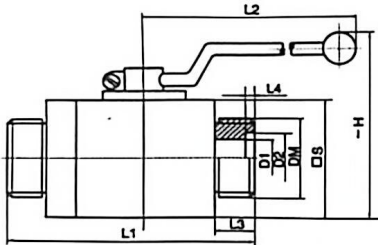
CJZQ球形截止阀用于液压管路中控制油液的流通和截止。本型球阀具有流阻损失小、密封性能可靠、操作方便、外观精美等特点。

本型高压球阀主要由阀体、球阀、阀杆、手柄和密封装置组成。阀体采用钢质锻件，表面镀铬。同时也提供本型不锈钢球阀。本型高压球阀主要有三种连接方式：外螺纹式、内螺纹式和法兰式。

CJZQ type high pressure ball valve is used to control fluid flow and stopping in the hydraulic pipe. The ball valve has the advantages of small flow loss, reliable sealing performance, convenient operations, and beautiful cosmetic. The high pressure ball valve is composed of valve body, valve rod, handle, and sealing device. The valve body adopts forging steel coated with chrome. There are three connections including external thread, internal thread, and flange.



外形尺寸 / Cosmetic Dimensions



型号 Model	D1/DN (mm)	尺寸mm Dimensions							
		L1	L2	L3	L4	H	D2	□S	DM
CJZQ-L6H	6	72	100	12	1.5	80	11	34	M16x1.5
CJZQ-L8H	8	86	100	14	1.5	80	16	44	M22x1.5
CJZQ-L10H	10	100	127	15	1.8	90	20	46	M27x1.5
CJZQ-L15H	15	105	127	16	1.8	94	24	50	M30x1.5
CJZQ-L20H	20	121	184	18	2.4	115	30	60	M36x2
CJZQ-L25H	25	135	184	20	2.4	122	35	68	M42x2
CJZQ-L32H	32	160	215	22	2.4	145	40	85	M52x2
CJZQ-L40H	40	180	215	30	2.4	150	45	90	M60x2
CJZQ-L50H	50	205	229	35	2.4	190	55	120	M72x2

型号 Model	D1/DN (mm)	尺寸mm Dimensions						
		L1	L2	L3	H	D1	□S	DM
CJZQ-G6H	6	68	100	12	80	6	44	M14x1.5
CJZQ-G8H	8	70	100	14	80	8	44	M16x1.5
CJZQ-G10H	10	88	127	14	85	10	52	M18x1.5
CJZQ-G15H	15	91	127	16	89	13	55	M27x2
CJZQ-G20H	20	100	184	18	109	19	65	M33x2
CJZQ-G25H	25	111	184	20	114	24	70	M42x2
CJZQ-G32H	32	131	215	22	129	30	81	M48x2

型号 Model	D1/DN (mm)	尺寸mm Dimensions							
		L1	L2	H	D1	□S	□S1	4-M	D
CJZQ-F10H	10	88	127	90	10	52	28.3	M8	73
CJZQ-F16H	16	91	127	94	13	58	35.4	M8	78
CJZQ-F20H	20	97	184	115	19	85	43.8	M10	88
CJZQ-F25H	25	111	184	122	24	70	51.8	M12	98
CJZQ-F32H	32	131	215	145	30	84	60.1	M14	128
CJZQ-F40H	40	141	215	150	38	96	69.3	M16	130
CJZQ-F60H	60	170	229	190	48	120	83.4	M20	156
CJZQ-F65H	65	185	290	190	60	142	102.5	M20	178
CJZQ-F80H	80	225	290	220	70	180	113.1	M24	218
CJZQ-F100H	100	260	290	260	90	200	140	M30	260

YJZQ型高压球阀

YJZQ Type High Pressure Ball Valve

型号代号(订货示例) / Type Description (Illustrations for order)

$\frac{Y}{(1)}$ $\frac{JZQ}{(2)}$ - $\frac{\square}{(3)}$ $\frac{\square}{(4)}$ $\frac{\square}{(5)}$

产品简介 / Product Overview

YJZQ型高压球阀主要用于液压管路中控制油液的流通和截止。本型球阀具有流阻损失小、密封性能可靠、操作方便、外观精美等特点。

本型高压球阀阀体采用钢质锻件，表面镀铬。同时也提供本型号不锈钢球阀。

YJZQ type high pressure ball valve is used to control the flow and stop of the fluid in the hydraulic pipe.

The ball valve has the advantages of small flow loss, reliable sealing performance, convenient operations, and beautiful cosmetic. The high pressure ball valve body adopts chrome-plated steel forging. In addition, we also provide stainless steel ball valve of the same type.

(1)适用: Y—液压系统

Applicable: Y hydraulic system

(2)名称代号: JZQ—球形截止阀

Name code: JZQ ball stop valve

(3)公称压力/ Nominal pressure: J—31.5MPa H—21MPa

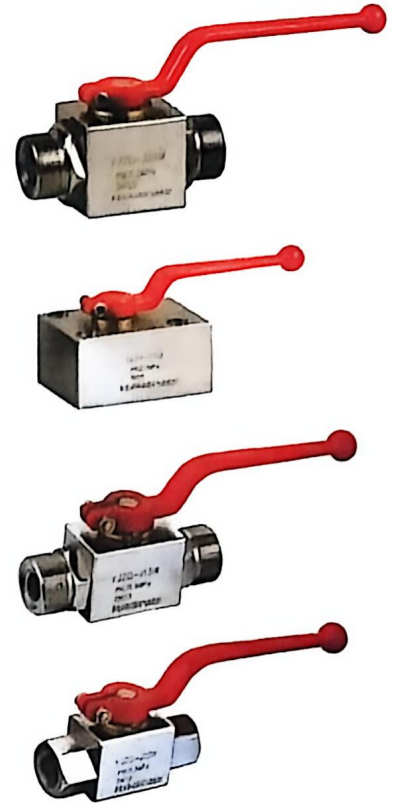
(4)公称口径/ Nominal diameter: 10—50mm

(5)连接形式: N—内螺纹连接(G英制管螺纹) (ZG英制锥管螺纹) (NPT美标螺纹)

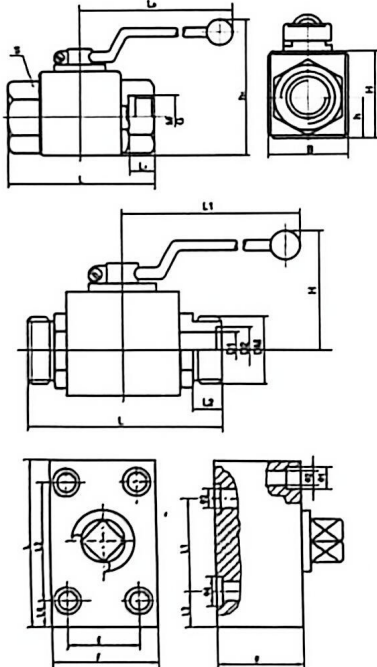
Internal thread connection (G Britain standard pipe thread)

W—外螺纹连接 / Wexternal thread connection

B—板式连接 / B-Disc connection



外形尺寸 / Cosmetic Dimensions



型号 Model	D1	D2		L1	L2	L4	H2
		M	Q				
YJZQ-J08N	ø08	M14 × 1.5	G1/4"	89	13	28	34
YJZQ-J10N	ø10	M18 × 1.5	G3/8"	78	14	34	40
YJZQ-J15N	ø15	M22 × 1.5	G1/2"	86	18	37	43
YJZQ-J20N	ø20	M27 × 2	G3/4"	108	18	47	53
YJZQ-J25N	ø25	M33 × 2	Q1"	116	20	54	60
YJZQ-J32N	ø30	M42 × 2	Q1 1/4"	136	22	64	70
YJZQ-J40N	ø38	M48 × 2	Q1 1/2"	148	24	74	80
YJZQ-J50N	ø48	M64 × 2	Q2"	180	28	88	104

外螺纹连接 Male thread join

型号 Model	D1	D3	L1	L2	L3	L5	H1	H2	H3
YJZQ-J08W	ø08	M18 × 1.5	71	13	1.5	28	13.5	34	73
YJZQ-J10W	ø10	M27 × 1.5	90	18	2	34	18	40	78
YJZQ-J15W	ø12	M30 × 1.5	102	16	2	37	19	43	80
YJZQ-J20W	ø19	M38 × 2	124	18	2	47	25	53	101
YJZQ-J25W	ø24	M42 × 2	136	20	2	54	28.5	60	111
YJZQ-J32W	ø30	M52 × 2	149	20	2	64	33	70	134
YJZQ-J40W	ø37	M64 × 2	180	24	2.75	74	40	80	165
YJZQ-J50W	ø48	M72 × 2	210	26	2.75	86	45	104	180

板式连接 Manifold mounting

型号 Model	YJZQ-J10W	YJZQ-J15W	YJZQ-J20W	YJZQ-J25W	YJZQ-J32W	YJZQ-J40W	YJZQ-J50W
带螺母式管接头螺母 / B9981-77 Welded union nut	M27 × 1.5	M30 × 1.5	M36 × 1.5	M42 × 2	M52 × 2	(自配) Autonomous	M72 × 2
带螺母式接管 / B2099-77 Welded connecting pipe	18	22	28	34	42	50	63
O形密封圈 / GB1235-76 O-Ring	20 × 2.4	22 × 2.4	30 × 3.1	30 × 3.1	40 × 3.1	50 × 3.1	60 × 3.1

型号 Model	D	D2	D3	E	F	L	A	A1	A2	A3	A4	A5	H	H1	H2	H3	D1 × d0	SW
YJZQ-J10B	10	7	11	38	54	88	78	45	68	11	10	45	54	42	8.5	35	18 × 2.4	8
YJZQ-J15B	13	9	14	42	60	98	88	52	80	8	18	49.5	57	45	8.5	38	20 × 2.4	9
YJZQ-J20B	18	11	17	60	70	118	108	60	70	7.5	17.5	57	70	55	12	44	25 × 2.4	12
YJZQ-J25B	22	11	17	68	77	124	114	65	80	11	17	62.5	75	60	12	48	32 × 3.1	14
YJZQ-J32B	30	13	19	78	100	164	152	80	120	18	18	81.5	83	78	14	63	40 × 3.1	14
YJZQ-J40B	38	17	26	90	122	200	185	110	180	23	18	97	107	90	14	73	50 × 3.1	14

注: (1) O形密封圈随阀体, 标准号为GB1235-76。
(2) 螺钉规格10.9级, 请查阅本厂在订货时说明。

● 使用及订货注意事项

订货时应完整写明型号每个代号及附说明。例如

(1) 公称压力31.5MPa, 公称口径20mm, 公制内螺纹连接的本型球阀, 其型号为YJZQ-J20N

(2) 公称压力31.5MPa, 公称口径15mm, 内接时制管螺纹连接的本型球阀, 其型号为YJZQ-G1/

(3) 公称压力31.5MPa, 公称口径32mm, 外螺纹连接, 带接管和螺母的本型球阀, 其型号为YJZQ-J32W(带接管、螺母)

(4) 公称压力31.5MPa, 公称口径10mm, 板式连接, 带螺钉的本型球阀, 其型号为YJZQ-J10B(带螺钉)

JZQ型高压球阀

CJZQ Type High Pressure Ball Valve

型号代号 (订货示例) / Type Description (Illustrations for order)

JZQ - **※** **※** **※**
 (1) (2) (3) (4)

(1)名称代号: JZQ—球形截止阀
 Name code: JZQ ball core stop valve

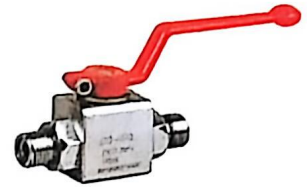
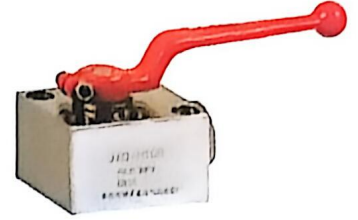
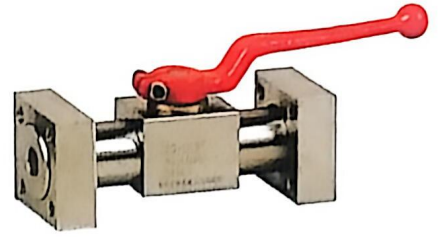
(2)连接方式 / Connecting method
 L外螺纹连接式/L-External thread connection
 G内螺纹连接式/G-Internal thread connection
 B板式连接 / B-Disc connection
 F法兰式连接/F-Flange connection
 (3)公称直径/Nominal diameter: 6—65mm
 (4)公称压力/ Nominal pressure: H—31.6MPa
 F—20MPa

产品简介 / Product Overview

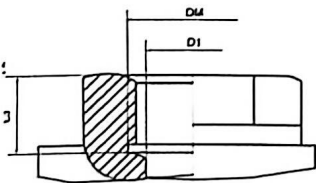
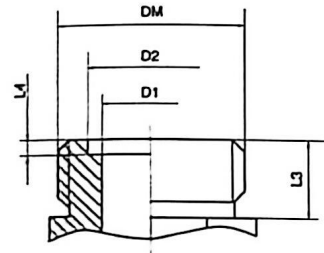
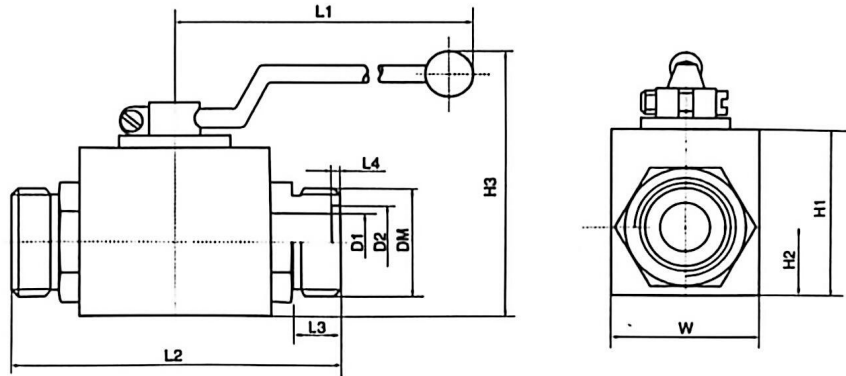
JZQ型高压球阀主要用于液压管路中控制油液的流通和截止。本型球阀具有流阻损失小、密封性能可靠、操作方便、外观精美等特点。

本型高压球阀主要由阀体、球体、阀杆、手柄和密封装置组成。阀体采用钢质锻件，表面镀铬。同时也提供本型不锈钢球阀。本型高压球阀主要有四种连接方式：外螺纹式、内螺纹式、法兰式和板式连接。

JZQ type high pressure ball valve is used to control fluid flow and stopping in the hydraulic pipe. The ball valve has the advantages of small flow loss, reliable sealing performance, convenient operations, and beautiful cosmetic. The high pressure ball valve is composed of valve body, ball body, valve rod, handle, and sealing device. The valve body adopts forging steel coated with chrome. We also provide basic type stainless steel ball valve of the same specifications. There are four connections including external thread, internal thread, flange, and disc connection.



外形尺寸 / Cosmetic Dimensions



型号 Model	DN (mm)	尺寸 mm Dimensions											重量 (kg)
		L1	L2	L3	L4	H1	H2	H3	W	D1	D2	DM	
JZQ-H6L	6	100	80	12	1.28	33	13.5	65	26	6	11	M16x1.5	0.5
JZQ-H10L	10	130	80	12	1.97	38	17.5	71	32	10	16	M22x1.5	0.7
JZQ-H15L	15	130	91	14	1.97	48	21	81	40	15	25	M30x1.5	0.9
JZQ-H20L	20	170	108	16.5	1.97	57	24.5	101	49	20	30	M36x2	1.3
JZQ-H25L	25	170	126	20	1.97	68	32.5	112	61	24	35	M42x2	1.9
JZQ-H32L	32	210	144	22	1.97	80	38	125	72	30	40	M52x2	3.5
JZQ-H40L	40	210	160	24	1.97	92	44	137	85	38	50	M60x2	5.8

型号 Model	DN (mm)	尺寸 mm Dimensions											重量 (kg)
		L1	L2	L3	H1	H2	H3	W	D1	DM			
JZQ-H6G	6	100	80	12	33	13.5	65	26	6	M14x1.5	0.6		
JZQ-H10G	10	130	80	14	38	17.5	71	32	10	M18x1.5	0.7		
JZQ-H16G	15	130	91	16	48	21	81	40	15	M27x1.5	1.0		
JZQ-H20G	20	170	98	16	57	24.5	101	49	20	M33x2	1.4		
JZQ-H25G	25	170	116	20	68	32.5	112	61	24	M42x2	2.1		
JZQ-H32G	32	210	128	22	80	38	125	72	30	M48x2	3.7		
JZQ-H40G	40	210	135	24	92	44	137	85	38	M48x2	6.0		

QJH高压球芯截止阀

QJH High Pressure Globe Stop Valve

型号代号(订货示例) / Type Description (Illustrations for order)

QJ **H** - **※** **※**
 (1) (2) (3) (4)

(1)名称代号: QJ—球芯截止阀

Name code: QJ—globe stop valve

(2)公称通径/Nominal diameter, 10~100mm

(3)公称压力/ Nominal pressure, H—31.5MPa

(4)连接方式 / Connecting method

B板式连接/ B—Manifold mounting

F螺栓连接圆法兰连接/F—Bolt flange connection

F1焊接法兰式连接/F1—Flange connection

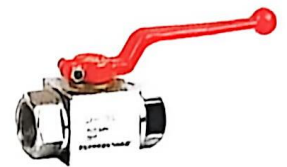
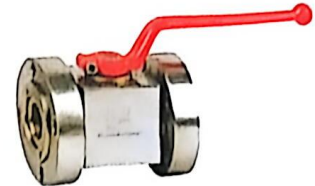
WL外螺纹连接式/WL—External thread connection

NL内螺纹连接式/NL—Internal thread connection

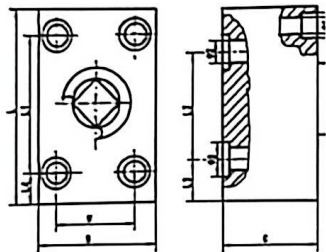
产品简介 / Product Overview

QJH高压球芯截止阀结构紧凑、性能可靠、外观精美。采用锻钢阀体，密封环为自润滑工程塑料，耐高压、密封性好，手把搬动灵活舒适。球阀芯及阀体内外表面均作防腐处理，适用于各种油类及水基乳化液为介质的液压系统。有外螺纹、内螺纹、法兰式和板式连接；同时也提供本型不锈钢球阀。

QJH series high pressure globe stop valve has the advantages of small flow loss, reliable sealing performance, convenient operations, and beautiful cosmetic. Sealing ring is self-lubricating engineering plastic, high pressure, good sealing, flexible and comfortable handle moving. The ball valve core and valve inner and outer surfaces are treated with preservatives, applicable to a variety of oils and water-based emulsion as the medium of the hydraulic system. The valve body adopts forging steel. We also provide basic type stainless steel ball valve of the same specifications. There are four connections including external thread, internal thread, flange, and disc connection.

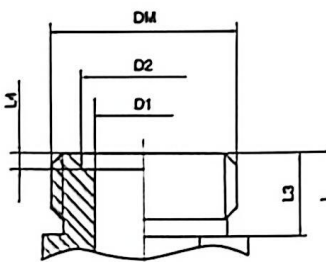


外形尺寸 / Cosmetic Dimensions



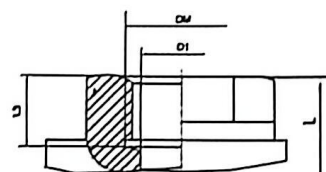
板式连接尺寸 / Manifold mounting dimensions

型号 Model	L	B	C	L ₁	L ₂	L ₃	L ₄	H	Ø ₁	Ø ₂	Ø ₃	Ø ₄
QJH-10B	80	54	40	60	45	23	12	38	Ø7	Ø10	Ø16	Ø10
QJH-16B	91	60	46	60	52	25	19	42	Ø9	Ø15	Ø20	Ø13
QJH-20B	108	70	54	70	60	30	21.5	50	Ø11	Ø20	Ø25	Ø15
QJH-25B	125	77	60	80	72	33	30	55	Ø11	Ø25	Ø32	Ø16
QJH-32B	161	100	72	120	99	37	23	75	Ø13	Ø32	Ø40	Ø19
QJH-40B	187	122	90	150	112	43	20	90	Ø17	Ø40	Ø50	Ø25



外螺纹连接尺寸 / Male thread joint dimensions

型号 Model	DM	L	D ₁	D ₂	L ₁	L ₁	H	B
QJH-6WL	M16x1.5	70	6	11	12	1.28	27	24
QJH-10WL	M22x1.5	86	10	16	14	1.97	37	34
QJH-15WL	M30x1.5	96	15	25	16	1.97	40	35
QJH-20WL	M36x2	114	18	30	18	1.97	55	48
QJH-25WL	M42x2	122	22	35	20	1.97	61	58
QJH-32WL	M52x2	145	30	40	22	1.97	72	68
QJH-40WL	M60x2	162	36	50	24	1.97	90	80



内螺纹连接尺寸 / Female thread joint dimensions

型号 Model	DM	L	D ₁	L ₁	H	B
QJH-6NL	M16x1.5	68	6	10	27	24
QJH-10NL	M18x1.5	76	10	14	37	34
QJH-15NL	M27x2	88	15	16	46	44
QJH-20NL	M33x2	102	18	16	55	48
QJH-25NL	M42x2	116	22	20	61	58
QJH-32NL	M48x2	129	30	20	72	68
QJH-40NL	M60x2	147	36	24	90	80

AQF型蓄能器安全球阀

AQF Type Energy Storage Safety Ball Valve

型号代号 (订货示例) / Type Description (Illustrations for order)

AQF - **L** **25** **H1** - **A** **M60x2**
 (1) (2) (3) (4) (5) (6)

(1)名称代号: AQF—安全球阀

Name code: AQF safety ball valve(4)pressure adjusting range

(2)P油口连接方式/ P fluid connecting mode

L—直通式内螺纹/ L—Straight through internal thread

LS—直角式外螺纹/ LS—Right angle external thread

LW—三通式外螺纹/ LW—Three way external thread

(3)公称口径/Nominal diameter; 25、32、40mm

(4)压力调节范围/Nominal diameter;

H1—10MPa

H2—20MPa

H3—31.5MPa

(5)安全阀结构/Structure type;

A—直动形溢流阀/A—direct acting overflow valve

(6)蓄能器连接/Energy storage connector; M27x2、M42x2、M60x2、M72x2



产品简介 / Product Overview

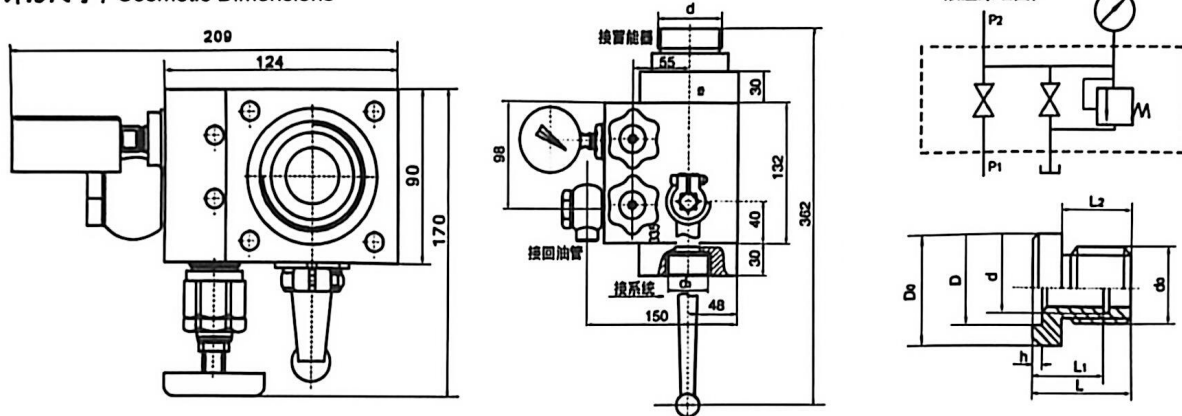
AQF型安全球阀主要用于液压——囊式蓄能器作为安全、断流和卸荷的蓄能器附件。安全阀可保持系统中的压力调定值。当压力超过调定值时,安全阀开启,防止系统过载,特别是封闭系统中的蓄能器更不可缺少,而防止外负荷的突然加大所造成系统的危害。

特点:结构紧凑、体积小,安全方便,操作简单。

AQF type safety ball valve, as a type of hydraulic bladder energy storage, is used for safety, circuit break, and unloading. The safety valve may keep the system pressure at the set value. When the pressure overpasses the set value, the safety valve will open to avoid overload. It is especially important for the closure system to minimize the damage to the system resulting from sudden increase of load.

Feature: compact structure, small size, safe and convenience, simple operation.

外形尺寸 / Cosmetic Dimensions



型号 Model	公称流量 Nominal flow L/min		连接尺寸 Connector dimensions			配用蓄能器型号 Energy storage type	重量 (Kg) Weight
	安全阀 Safety Valve	球阀 Ball Valve	H	d	d ₁		
AQF-L25H※-A	40	100	31	M27x2 M42x2	M33x2	NXQ-L1.6~L10/※-H	29
AQF-LS25H※-A			42		M42x2		
AQF-LW25H※-A			42		M42x2		
AQF-L32H※-A	63	160	31	M42x2 M60x2	M42x2	NXQ-L10~L100/※-H	29.5
AQF-LS32H※-A			42		M52x2		
AQF-LW32H※-A			42		M52x2		
AQF-L40H※-A	100	250	31	M60x2 M72x2	M48x2	NXQ-L10~L100/※-H	30
AQF-LS40H※-A			42		M60x2		
AQF-LW40H※-A			42		M60x2		

补芯型号 Bushing model	d ₀	d	D ₀	D	h	L	L ₁	L ₂	重量 (Kg) Weight
QF-L25	M60x2	M42x2	80	∅68	2.4-0.05	50	28	35	1.52
QF-L40	M72x2	M60x2	95	∅80	2.4-0.05	60	38	42	2.15

利用补芯可扩大AQF安全球阀的使用范围,例如100升蓄能器只需装配一件补芯就可选用配备1.6—6.3的小型安全球阀,亦可解决蓄能器接小管径的问题;同时也解决进口蓄能器与国产蓄能器互换性的问题。

Bushing may increase the application range of AQF safety ball valve. For example, 100L energy storage may work 1.6—6.3 small sized safety ball valve only with one bushing, solving the problem of the small diameter of the energy storage and the connectivity of the imported energy storage with the domestic energy storage.

CQJ型充气工具

CQJ Type Accumulator Charging Accessory

技术参数 / Technical Specifications

可选压力表量程 / Optional Range Of Large

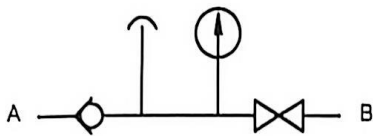
Pressure Gauge : 16、25、40Mpa

可选胶管长度 / Optional Rubber Pipe Length: 600-3000 mm

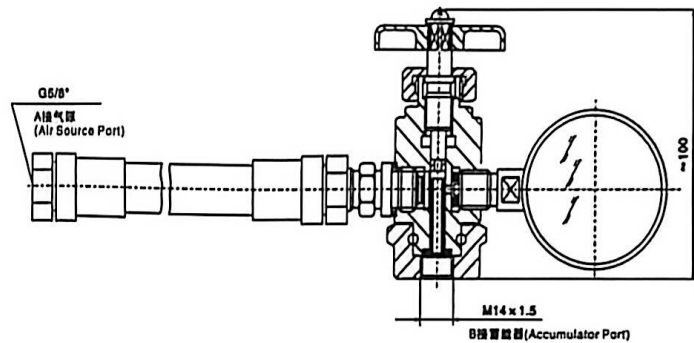
可充蓄能器型号 / Chargeable Accumulator Model: NXQ- $\frac{L}{F}$ * $\frac{L}{F}$ -H



图形符号 / Symbol



外形尺寸 / Cosmetic Dimensions



型号 Model	公称压力 Nominal Pressure (MPa)	与蓄能器 连接尺寸 With accumulator joint size	配用蓄能器型号 Compound accumulator type	配用压力表 Compound pressure meter		配用胶管规格 Hose spec	
				量程 Mileage (MPa)	精度 Precision	内径.层数 Inner dia.layer	长度 Length (mm)
CQJ-16	16	M14 x 1.5	NXQ- $\frac{L}{F}$ * $\frac{L}{F}$ -10-H	0~16	1.5级/Rank	Φ6×2	1000-3000
CQJ-25	25		NXQ- $\frac{L}{F}$ * $\frac{L}{F}$ -20-H	0~25			
CQJ-40	40		NXQ- $\frac{L}{F}$ * $\frac{L}{F}$ -31.5-H	0~40			

QXF-5型充气阀

QXF-5 Type Charge Valve

技术参数 / Technical Specifications

公称通径/ Nominal diameter: 5 mm

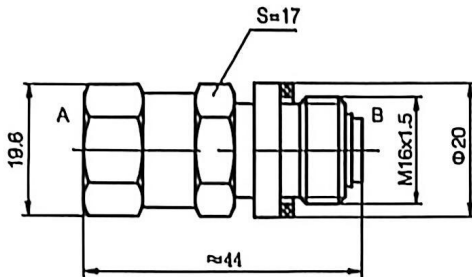
充压范围/ Pressurizing range: 0-40Mpa

可充蓄能器型号 / Chargeable accumulator model:

NXQ - ※0.6-100/※-H

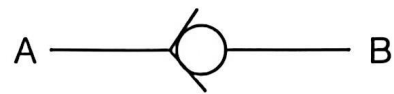


外形尺寸 / Cosmetic Dimensions



接胶囊
Connect Capsule

图形符号 / Symbol



技术规格

型号 (model)	充气压力范围 (Mpa)	公称通径 (mm)	螺纹连接		配用蓄能器型号	重量 (kg)
			进口	出口		
QXF-5	4-40	5	M14x1.5	M16x1.5	NXQ- ϕ 0.63 - ϕ 100/※-H	0.07

KF型压力表开关

KF Type Pressure Change Switch

型号代号 (订货示例) / Type Description (illustrations for order)

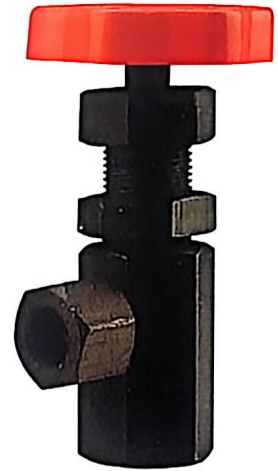
KF - **L** **8** / * **E**
(1) (2) (3) (4) (5)

连接方式 / Joint model: 螺纹连接 / Thread join

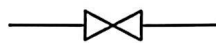
公称通径/ Nominal diameter: 8 mm

压力表接头/ Pressure gauge joint: M

公称压力/ Nominal Pressure: 32 Mpa

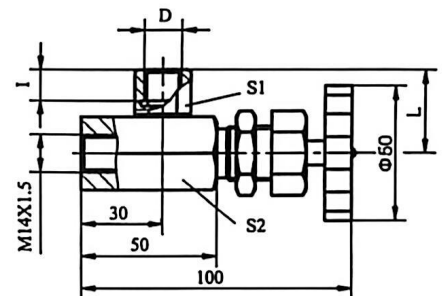


图形符号 / Symbol



外形尺寸 / Cosmetic Dimensions

型号 Model	D	S1	S2	I	L	压力表直径 Pressure gauge dia	压力表中心与压力表开关手柄中心的距离 (mm) Center of pressure gauge and distance between the switch of pressure gauge and handle center
KF-L8/12E	M12X1.25	27	31	16	31	Φ60	70
KF-L8/14E	M12X1.5	27	31	16	31	Φ60	75
KF-L8/20E	M20X1.5	27	31	16	31	Φ100, Φ150	110.132
KF-L8/30E	M30X1.5	38	46	26	48	Φ260	185
KF-L8/E	不装接头, 间接连接式/ No build in tie-in, indirect joint						

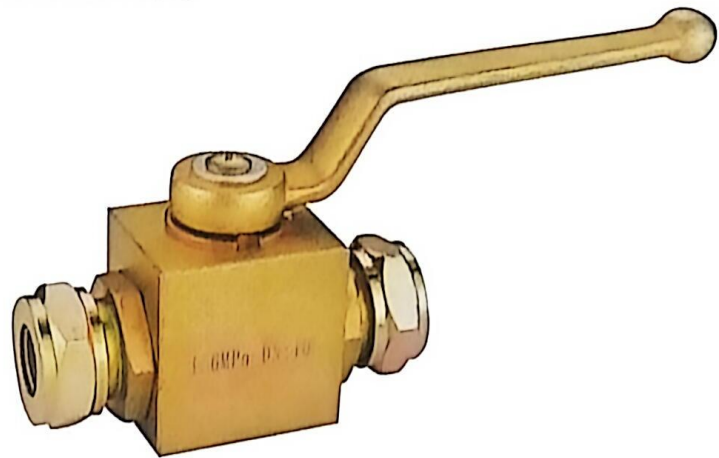


● 订货说明

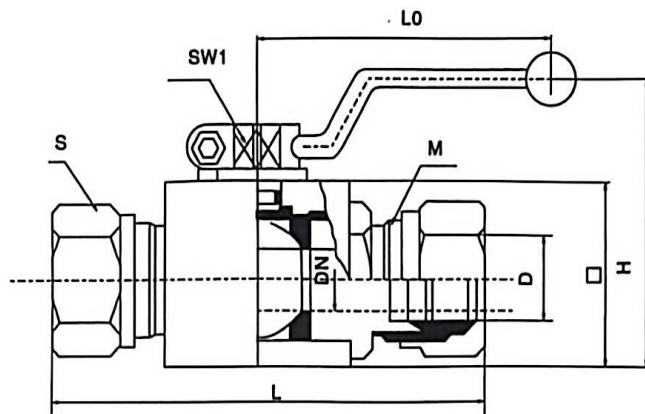
1. 订货时须写明型号代号全称, 如:工作压力:31.5MPa, 通径8mm, 压力表接头螺纹M14 x 1.5的压力表开关:KF-L8/M14 x 1.5E。
2. 如对此型单向阀有特殊要求时, 请同本企业商洽。

ZYQ系列卡套式高压球阀

ZYQ Series Card Sets High And Low Pressure Valve



● 外形尺寸 Overall Dimension



● 技术规格及外形尺寸 Specifications and Dimensions

型号 (钢管D)	尺寸mm							
	D	M	S	L	LO	H	SW1	□
ZYQ-J10E	10	18×1.5	24	82	120	65	9	34×28
ZYQ-J12E	12	20×1.5	24	86	120	65	9	34×28
ZYQ-J14E	14	22×1.5	27	83	130	75	9	40×34
ZYQ-J16E	16	24×1.5	30	92	120	75	9	40×34
ZYQ-J18E	18	27×1.5	34	102	120	78	9	40×34
ZYQ-J20E	20	30×2	36	102	120	78	9	43×37
ZYQ-J22E	22	33×2	41	125	160	98	12	43×37
ZYQ-J25E	25	36×2	41	125	160	98	12	53×47
ZYQ-J28E	28	39×2	46	125	160	98	12	53×47
ZYQ-J34E	34	45×2	54	150	185	116	12	60×54

注: ZYQ-T为压力6.4MPa ZYQ-H为压力21MPa ZYQ-J为压力31.5MPa

DIF A-H AJ系列直通式单向阀

DIF A-H AJ Series Straight One-Way Valve



● 简介

单向阀又称止回阀或逆止阀，用于液压系统中，防止油液反向流通。单向阀按其进口油流和出口油流的方向来分：有直通式、直角式两种。阀芯开启压力有0.04MPa和0.4MPa两种。前者开启的压力一般用在压力管路中，以防止油液反向流动；后者开启的压力一般作为背压阀使用。单向阀可与溢流阀、减压阀、顺序阀、节流阀、调速阀等并联组成单向溢流阀、单向减压阀、单向顺序阀、单向节流阀、单向调速阀等，以进一步发挥这些阀的功能。

本系列单向阀具有流阻损失小、无泄漏、无冲击等特点。

● 型号说明

$\frac{A}{1} - \frac{H}{2} \frac{\text{※}}{3} \frac{\text{※}}{4} \frac{L}{5}$ (新型号)

- 1、名称代号：直通单向阀
- 2、压力等级：H-31.5MPa
- 3、正向开启压力：a-0.04MPa, b-0.4MPa
- 4、公称口径：10、20、32mm
- 5、连接形式：L-螺纹式

$\frac{AJ}{1} - \frac{H}{2} \frac{\text{※}}{3} \frac{B}{4}$

- 1、名称代号：直通单向阀
- 2、压力等级：H-31.5MPa
- 3、公称口径：10、20、32mm
- 4、连接形式：B-板式

$\frac{DIF}{1} - \frac{L}{2} \frac{\text{※}}{3} \frac{H}{4} \frac{\text{※}}{5}$ (旧型号)

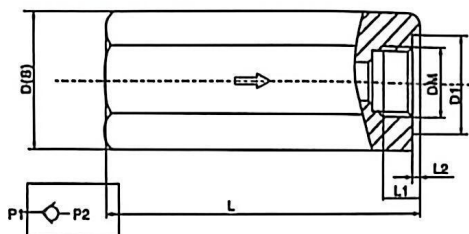
- 1、名称代号：直通单向阀
- 2、连接形式：L-螺纹式
- 3、公称口径：10、20、32mm
- 4、压力等级：H-31.5MPa
- 5、正向开启压力：a-0.04-0.1MPa, b-0.2-0.4MPa

● 技术参数

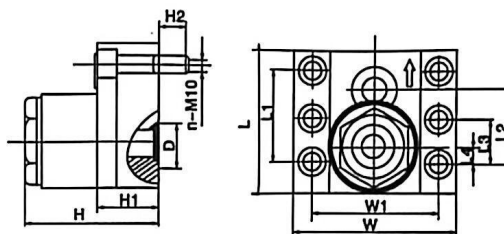
公称压力：31.5MPa
 开向开启压力：0.04-0.4MPa
 适用介质：矿物油、水-乙二醇和乳化液
 介质温度：-20℃~+65℃

● 外形尺寸

A-H10L-H32LDIF-L10H-L32H



AJ-H10B-H32B



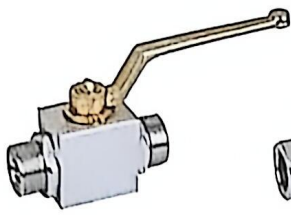
型号	DN (mm)	PN (mm)	基本尺寸(mm)							
			L	L1	L2	S	D	D1	DM	G
A-※H10L	10	31.5	82	18	-	36	41.5	-	22 × 1.5	G3/8
DIF-L10H※			75	16	-	27	31	-	18 × 1.5	
A-H※20L	20		106	23	1.2	48	55	42	33 × 2	G3/4
DIF-L20H※			102	21	1.8	42	48	63	27 × 2	
A-H※30L	30		128	28	-	65	74.8	-	48 × 2	G1/4
DIF-L32H※			140	30	-	63	72.8	-	42 × 2	

型号	DN (mm)	PN (mm)	基本尺寸(mm)											
			L	L1	L2	L3	L4	W	W1	H	H1	H2	D	n
AJ-H10B	10	31.5	72.5	43	35.7	-	7.1	90	66.7	87	30	16	22	4
AJ-H20B	20		94.3	60	49.7	-	11.1	105	79.4	98.5	36	15	32	4
AJ-H32B	30		118.1	84	67.5	42.1	16.7	120	96.8	123	45	16	40	6

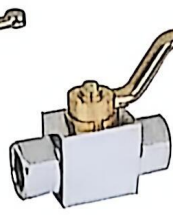
● 订货说明

- 1、订货时须写明型号代号全称，如：工作压力：31.5MPa，口径20mm的直通式单向阀：A-Ha20L。
- 2、如对此型单向阀有特殊要求时，请同本企业商洽。

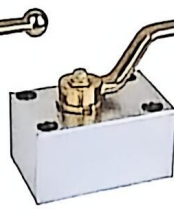
产品 Products



YJZQ外螺纹高压球阀



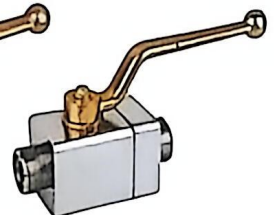
YJZQ内螺纹高压球阀



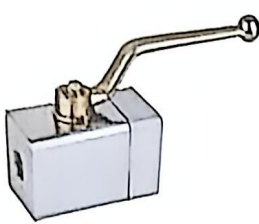
YJZQ板式高压球阀



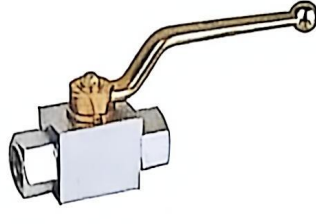
YJZQ带锁高压球阀



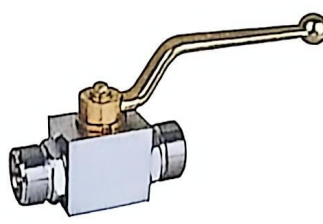
CJZQ外螺纹高压球阀



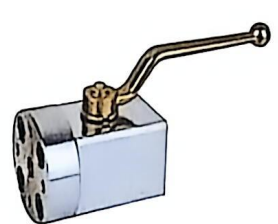
CJZQ内螺纹高压球阀



QJH内螺纹高压球阀



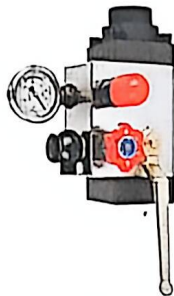
QJH外螺纹高压球阀



CJZQ法兰式高压球阀



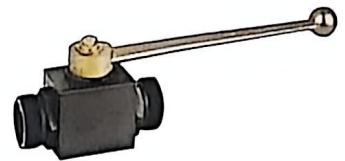
压力表开关



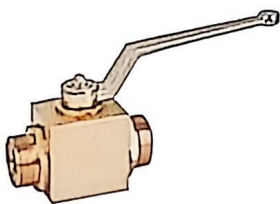
AQF型蓄能器安全阀组



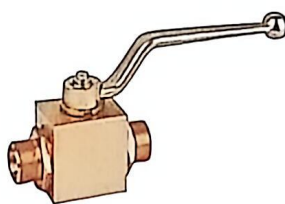
测压接头



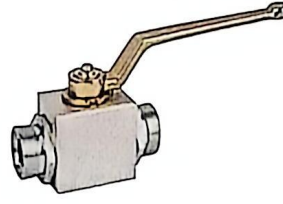
KHB直手柄外螺纹高压球阀



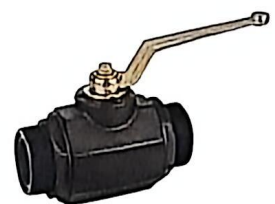
KHB型外螺纹高压球阀



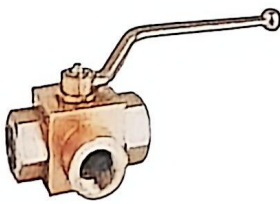
KHB型外螺纹高压球阀



环保锌处理
KHB型外螺纹高压球阀



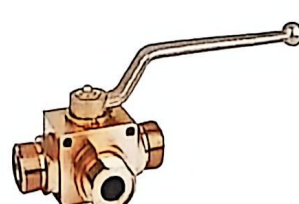
KHM外螺纹高压球阀



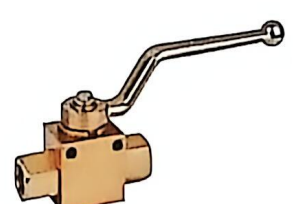
KHBT3K型内螺纹高压球阀



KHBT3K型外螺纹高压球阀



KHBT3K型高压球阀



KHB高压球阀